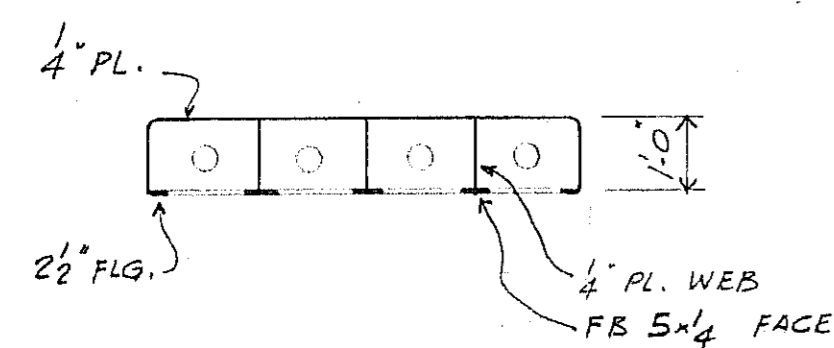
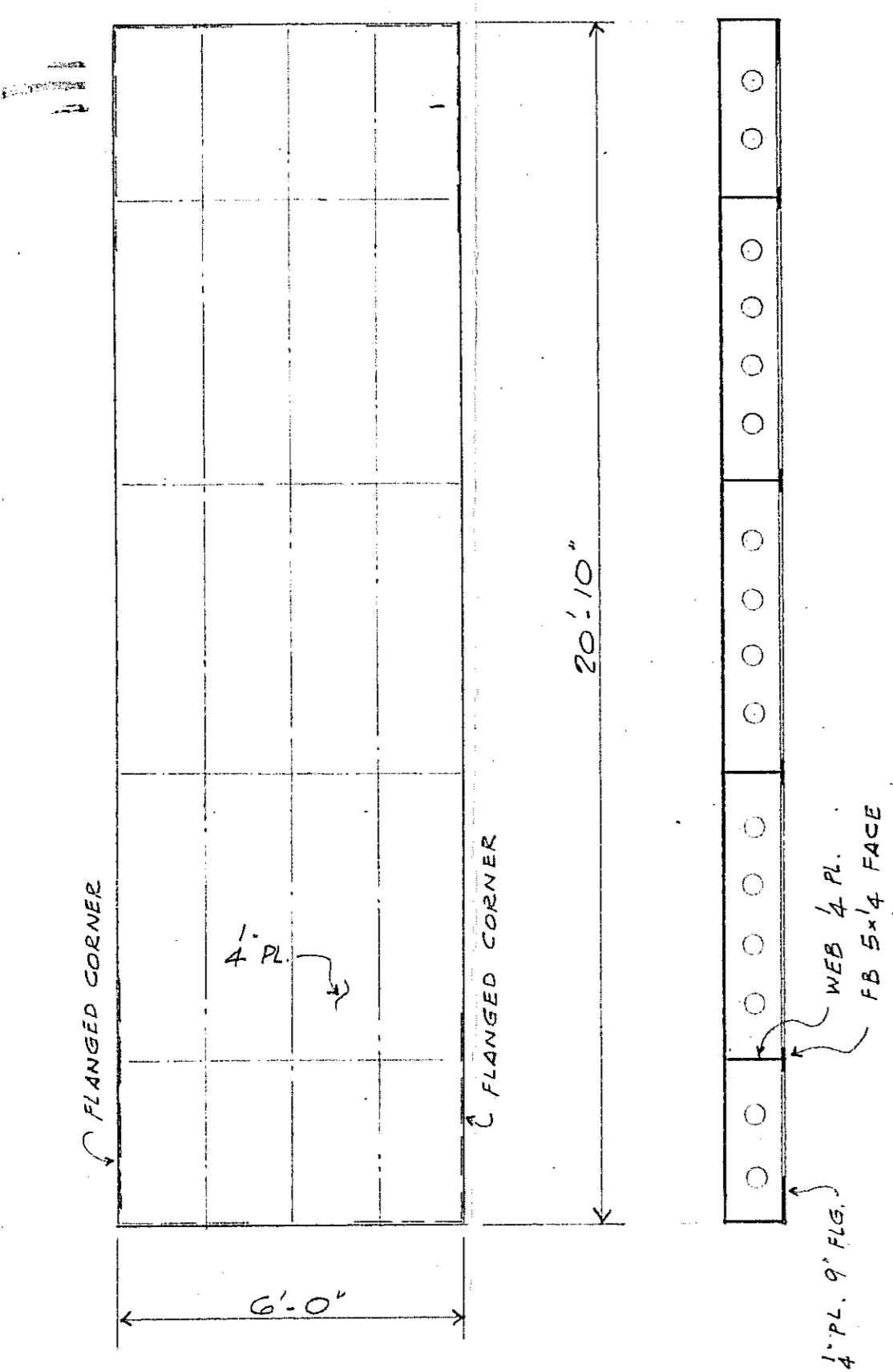
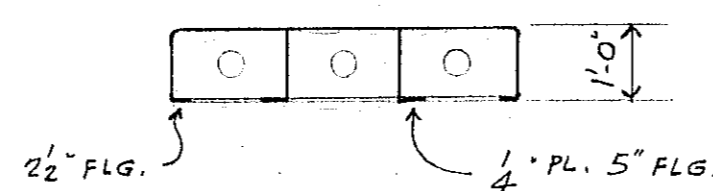
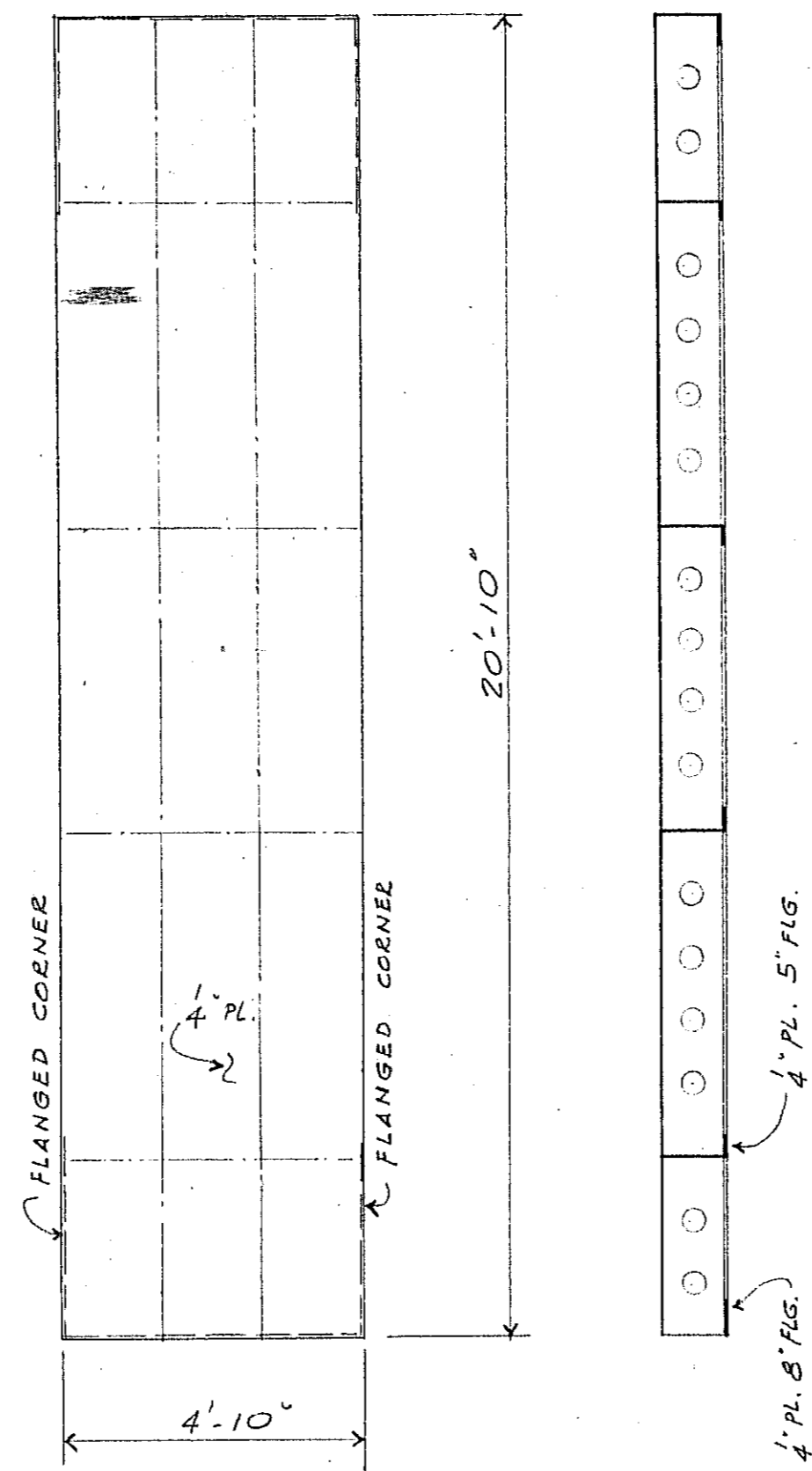


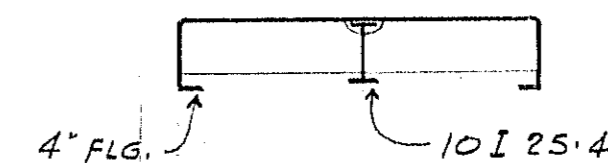
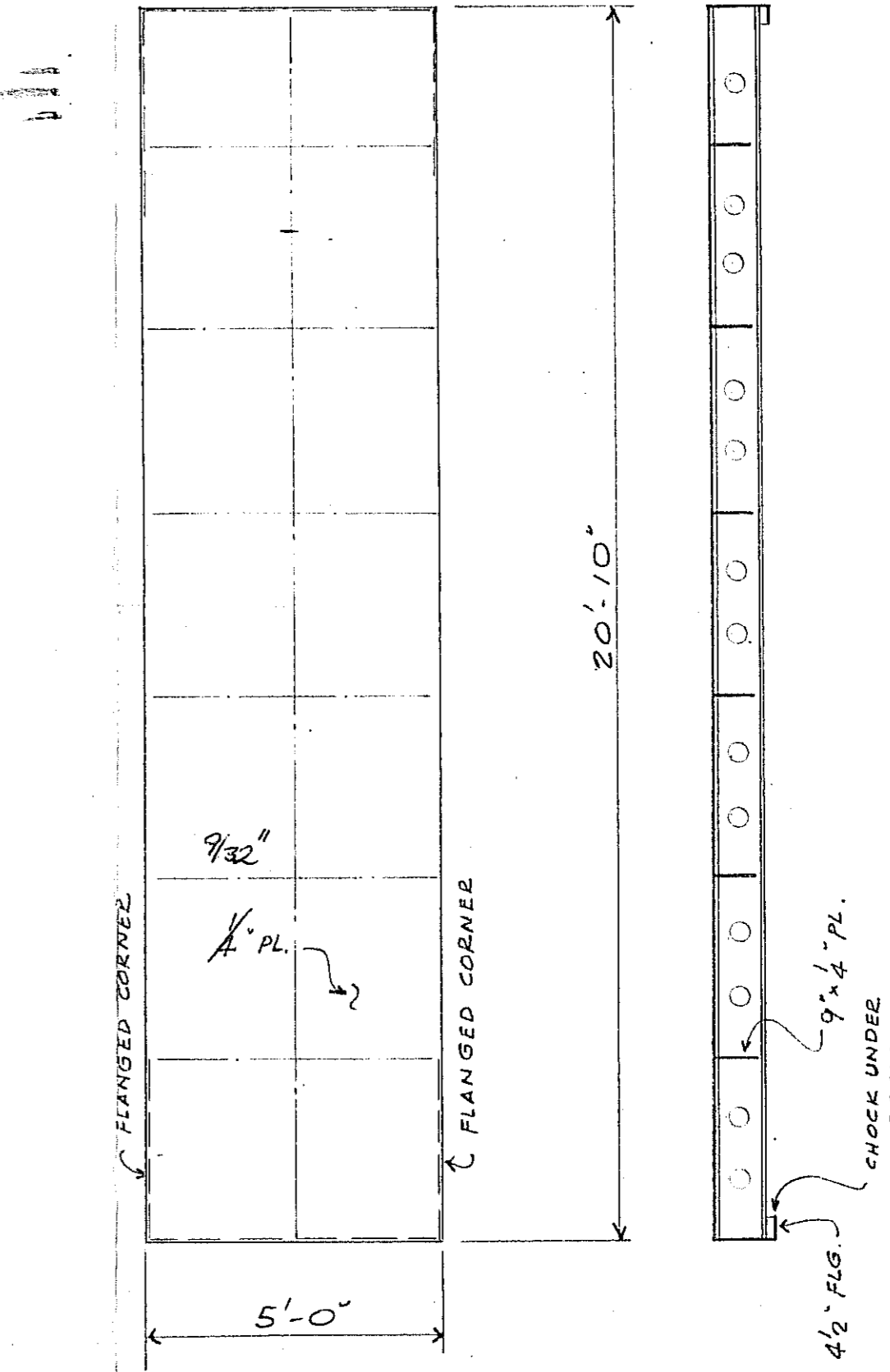
THIS PONTOON APPROX. 25'-0" LONG
TO HAVE SECTION AT END REMOVED
& EXISTING END RE-WELDED ON
AT NEW LENGTH



TYPE 1




TYPE 2



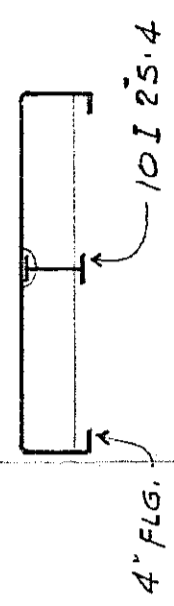
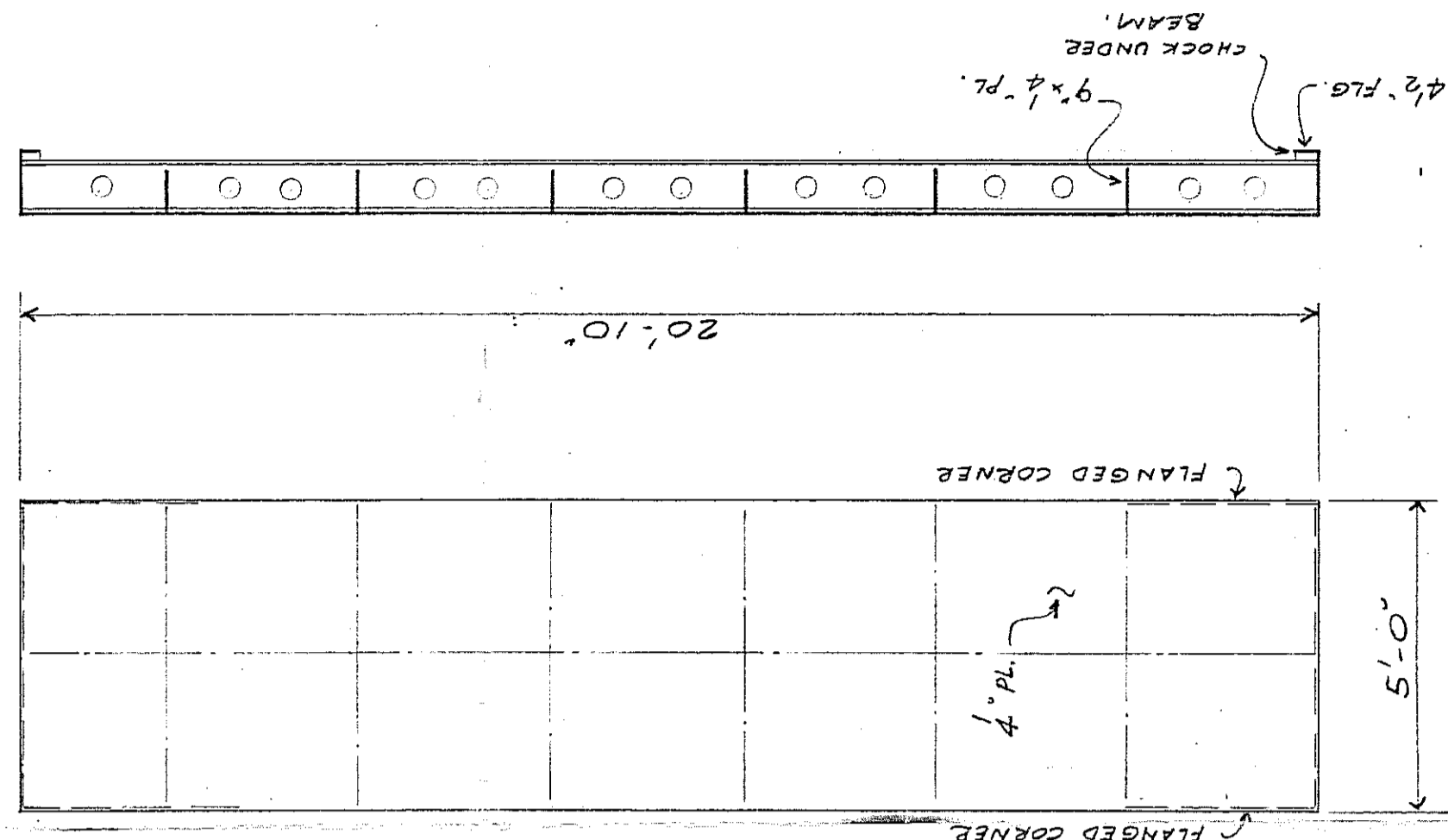
TYPE 3. SEE LETTER

381
5
1505

SEE 'LETTER' JAN 14 1972

REV. No.	REVISIONS	DATE
 ROBERT ALLAN LTD NAVAL ARCHITECTS MARINE ENGINEERS 1496 WEST 72 AVE VANCOUVER BC		
OWNER <u>CONTINENTAL EXPLOSIVES LTD.</u>		
VESSEL <u>MV SIGRID</u>		
TITLE <u>PONTOON HATCH COVERS.</u>		
APPROVED	DATE	SCALE: <u>3/8" = 1'-0"</u>
		DRAWN BY: <u>D.</u>
	DATE: <u>DEC. 21, 1971</u>	DWG. No. <u>31-71-4</u>

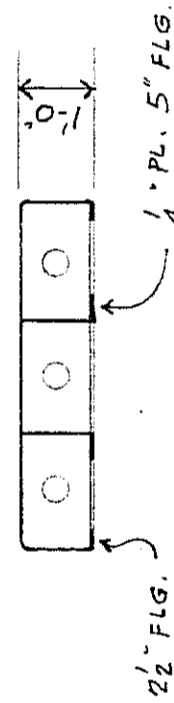
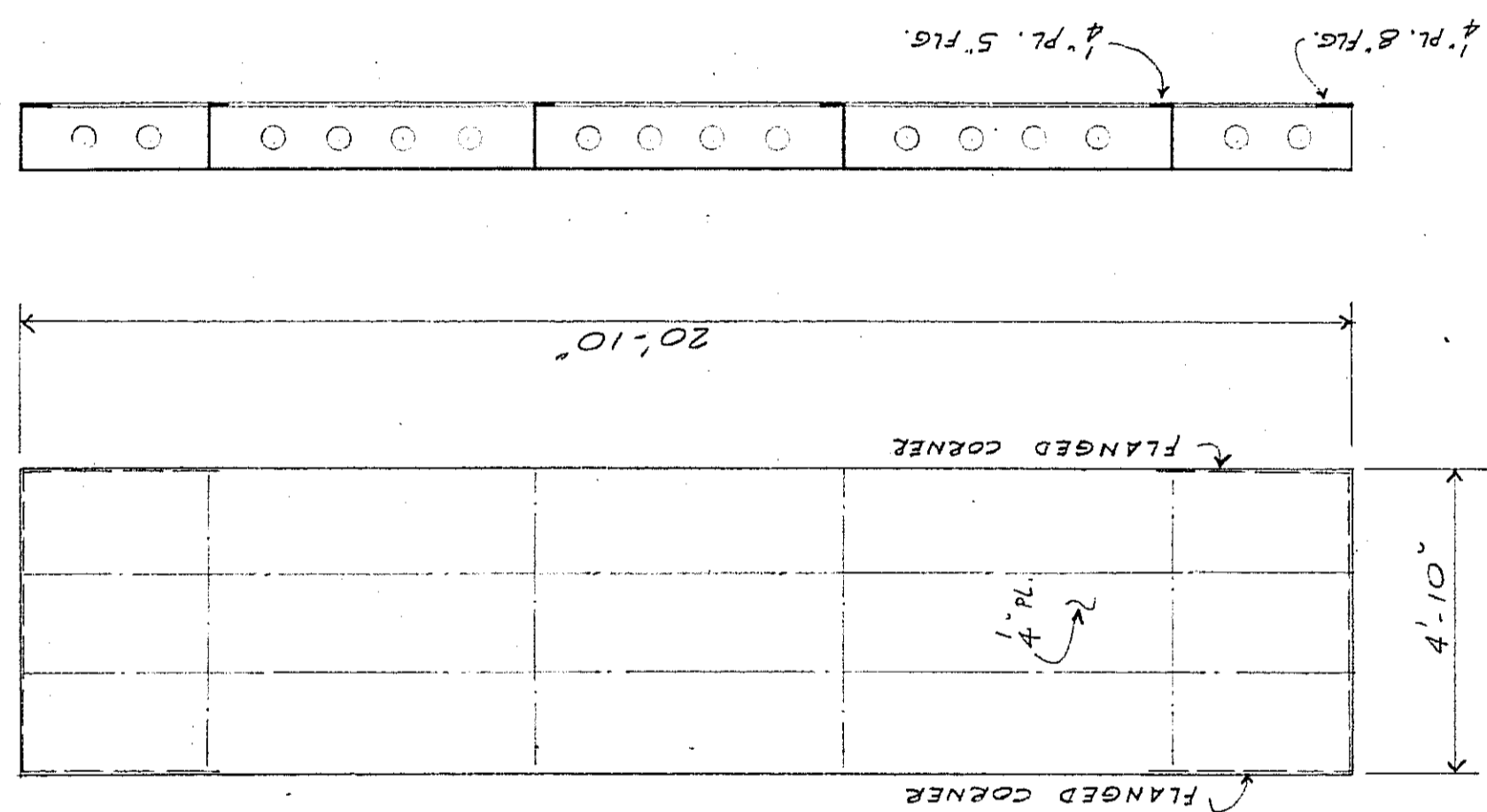
THIS PONTOON APPROX. 25'-0" LONG
TO HAVE SECTION AT END REMOVED
& EXISTING END RE-WELDED ON
AT NEW LENGTH



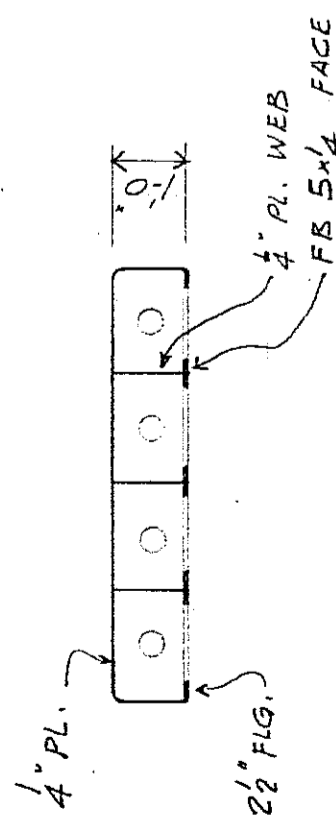
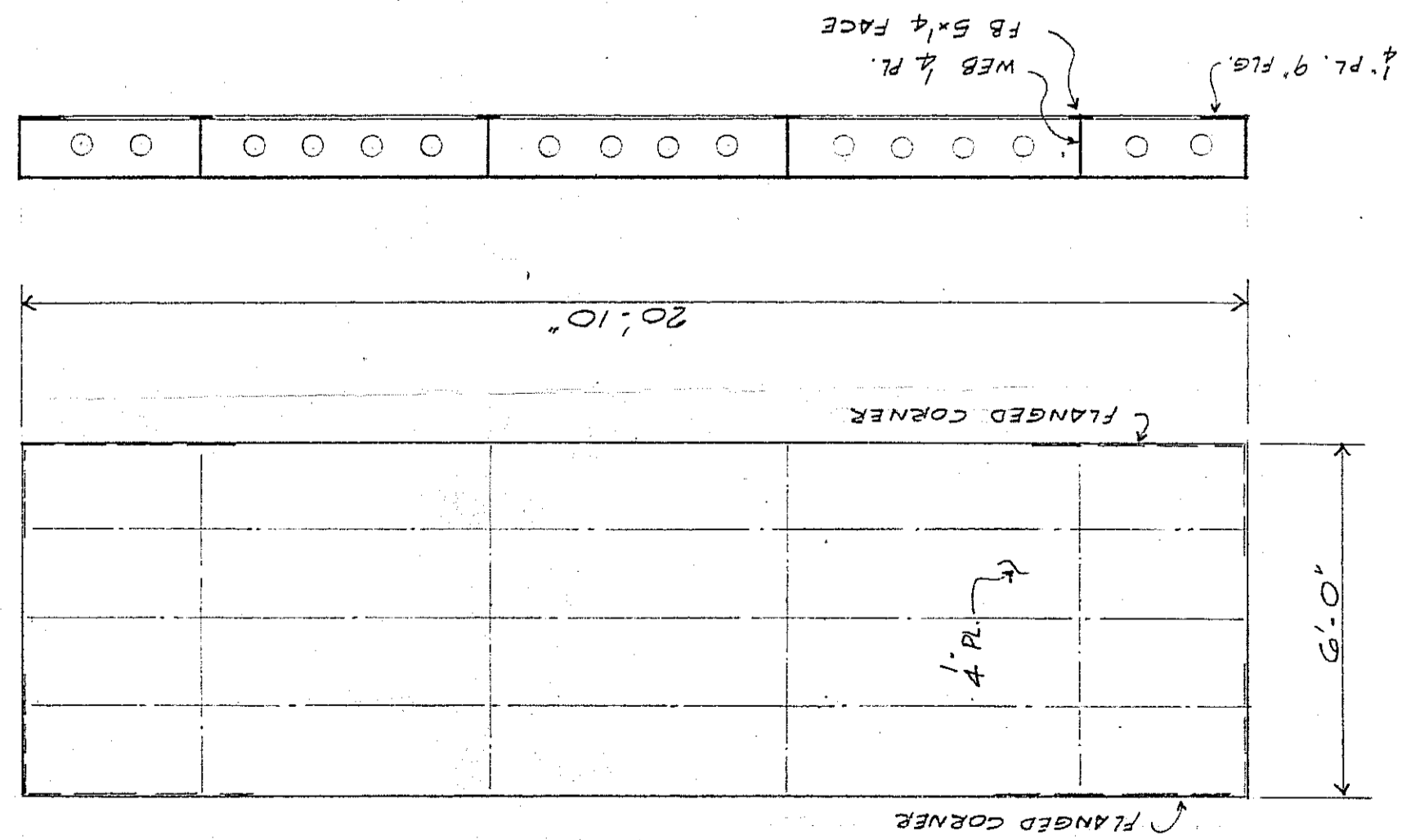
TYPE 3

Approval based on the following
assumed loads:

- 205 lbs./ft² evenly distributed.
- 4 wheel fork lift trucks + load = 19,500 lbs.

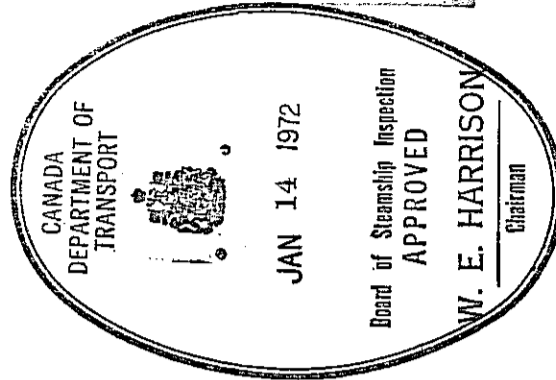


TYPE 2



TYPE 1

Welding to Surveyor's satisfaction.



SEE LETTER DATED JAN 14 1972

SUBJECT TO NOTATION IN RED

REV. No.	REVISIONS	DATE

ROBERT ALLAN LTD
NAVAL ARCHITECTS
MARINE ENGINEERS
1496 WEST 72 AVE
VANCOUVER BC

OWNER: CONTINENTAL EXPLOSIVES LTD.
VESSEL: SIGRID
TITLE: PONTOON HATCH COVERS

APPROVED	DATE	SCALE	3" = 1'-0"	DRAWN BY	REV.
	DEC. 21, 1971				31-71-4