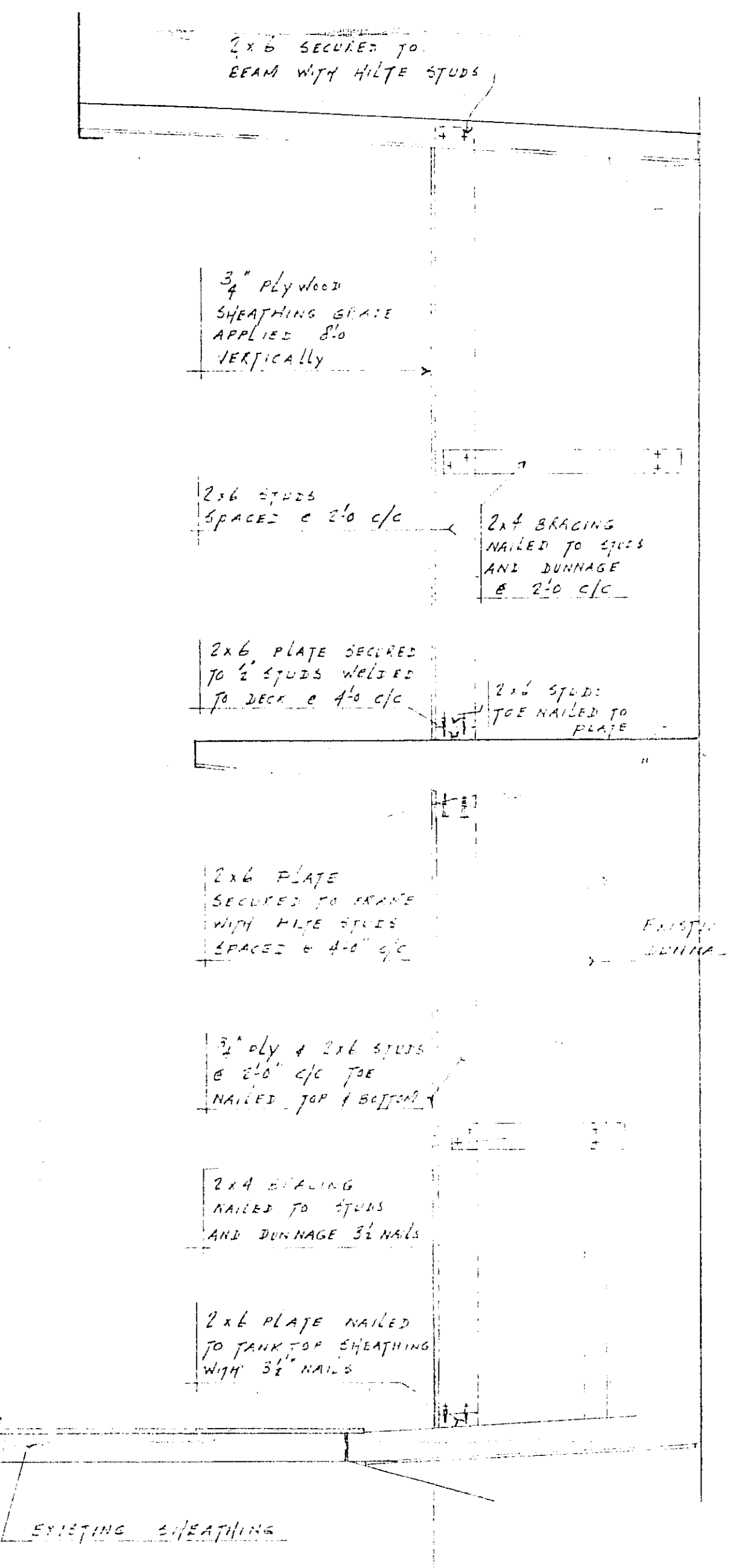
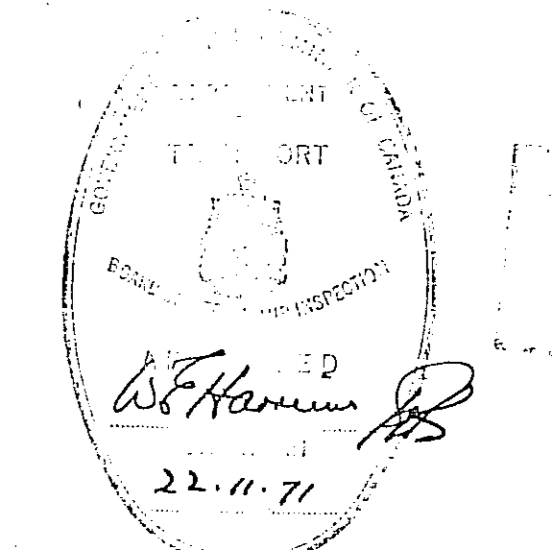


Bill of Material

LOWER HOLD	TANKTOP SHEATHING	108 SHYS - 3/4" ply
	LINING	95 " - 3/4" ply
	PLATE & STUDS	2300 LIN. FT 2x6 FIR
	BRACING	340 LIN. FT 2x4 FIR
TWEEN DECK	DECK SHEATHING	220 SHYS - 1/2" ply
	LINING	105 SHYS - 3/4" ply
	PLATE & STUDS	2550 LIN. FT 2x6 FIR
	BRACING	400 LIN. FT 2x4 FIR



HOW TO BE EFFICIENTLY SEAMLESS
FINE MEAN TO COVER PLATE



FEB 25 1988

REV. NO.	REVISIONS	DATE
ROBERT ALLAN LTD NAVAL ARCHITECTS MARINE ENGINEERS 1496 WEST 72 AVE VANCOUVER BC		
OWNER	CONTINENTAL Explosives Ltd	
VESSEL	"SIGRIT"	
TITLE	Hold ARRANGEMENT	
APPROVED	DATE	SCALE
		1:50
DATE	DESIGNED BY	DWG. NO.
MAR 3, 1971	CH	31-71-1